



Charlmont Road, London SW17 9AH

£950,000

PLEASE CHECK OUT OUR 3D VIRTUAL SHOWCASE OF THIS AMAZING HOME!

Birchills Estate Agents are very pleased to present the sales market this beautiful four bedroom semi - detached house, withing close walking distance to Tooting Broadway Tube Station and Tooting Railway Station.

The ground floor of this home boasts two separate reception rooms, a fully fitted kitchen, shower room and separate WC.

The first floor offers three double bedrooms and a family bathroom.

The second floor boasts a further double bedroom and an en suite.

To the rear there is a well sized garden and to the front there is off street parking.

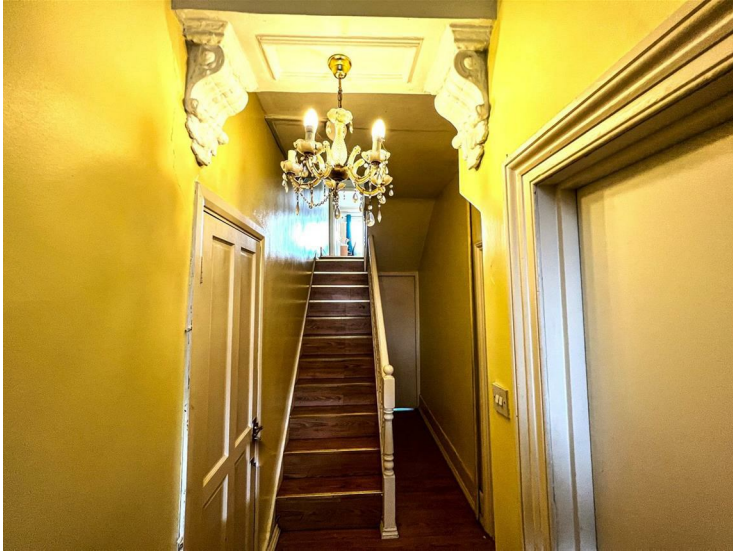
This property also benefits of a garage and LOTS OF POTENTIAL TO EXTEND.

Please call a member of Birchills Team today - we expect this fabulous home to sell very quickly.

Charlmont Road, London SW17 9AH

Garage
35'0" x 9'2" (10.68 x 2.81)

Entrance Hall
24'0" x 5'2" (7.32 x 1.6)



Reception 1
15'8" x 12'2" (4.8 x 3.73)



Reception 2
13'1" x 10'5" (4 x 3.2)



Shower Room
11'10" x 3'5" (3.61 x 1.05)



Bedroom 1
10'11" x 9'11" (3.34 x 3.03)



Charlmont Road, London SW17 9AH

Bedroom 2
13'4" x 10'10" (4.08 x 3.32)



En Suite
7'5" x 2'8" (2.27 x 0.82)



Bedroom 3
15'5" x 13'1" (4.7 x 4.01)



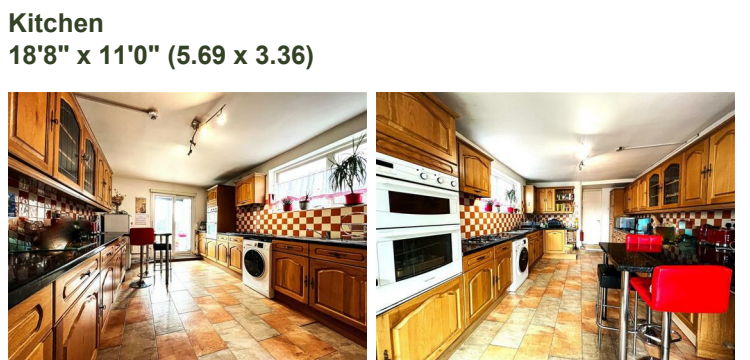
Bathroom
8'2" x 6'4" (2.51 x 1.95)

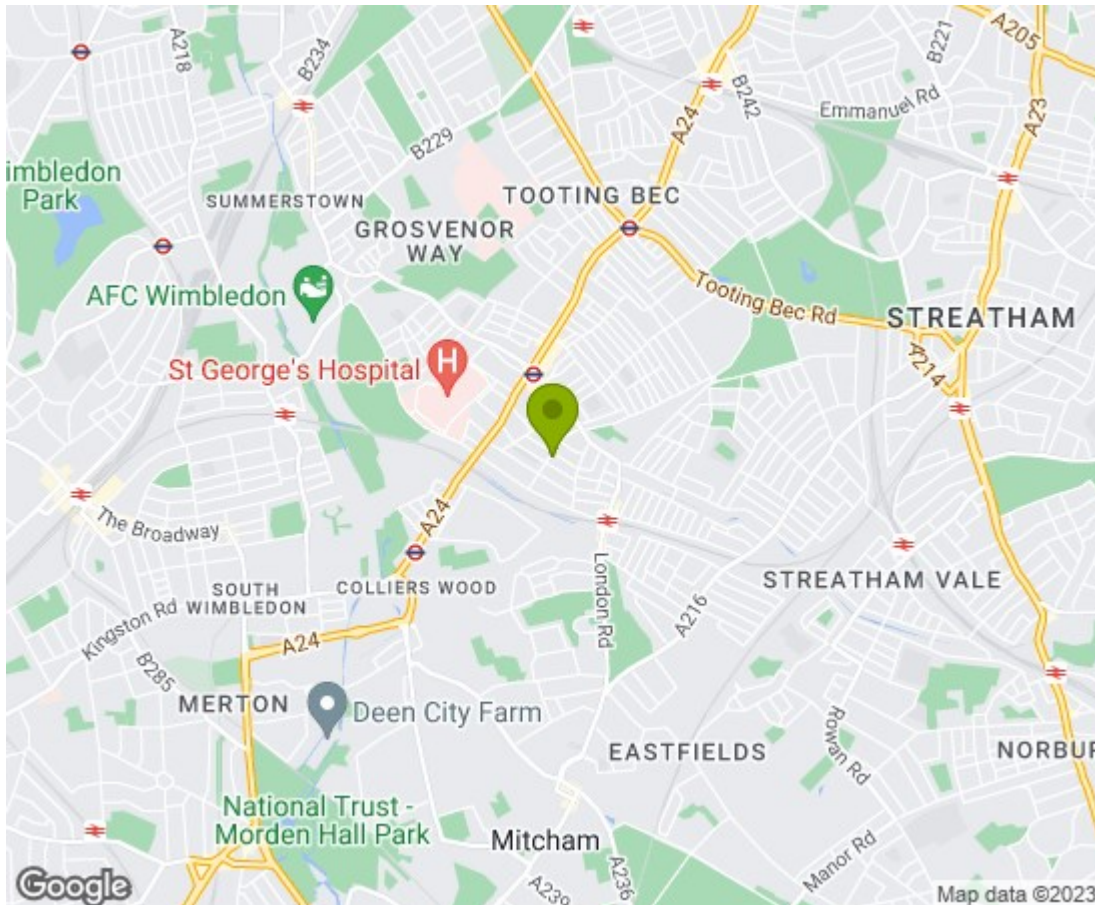


Bedroom 4
15'8" x 15'2" (4.8 x 4.64)

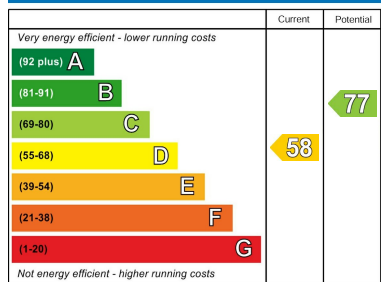


Landing
20'10" x 4'11" (6.36 x 1.5)



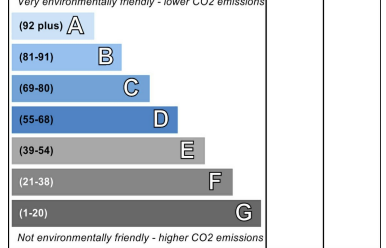


Energy Efficiency Rating



England & Wales EU Directive 2002/91/EC

Environmental Impact (CO₂) Rating



England & Wales EU Directive 2002/91/EC

